

The Barber of Seville

Table of Contents

Rental Information	3
Production Notes	4
Technical Schedule & Notes	5
Line Set Schedule	7
Rail Cue Sheet	10
Props List	12
Minis	14
Production Photos	18

Contact Information

For rental pricing and availability:

Production Assistant:

Katherine Cattrysse
(612) 342-9582
katherine@mnopera.org

For further renting inquiries:

Production Director:

Kevin Ramach
(612) 342-9583
kramach@mnopera.org

For production technical information:

Technical Director:

Mike McQuiston
(612) 342-9581
mike@mnopera.org

For surtitle rentals and inquiries:

Artistic Administrator:

Roxy Stouffer-Cruz
(612) 342-9571
roxy@mnopera.org

For costume rentals and inquiries:

Costume Shop Manager:

Erica Burds
(612) 342-9576
eburds@mnopera.org

For props rentals and inquiries:

Properties Master:

TBD
(612) 342-9589

The Minnesota
OPERA
620 North 1st Street
Minneapolis, MN 55401
toll free: (800) 676-6737
fax: (612) 333-0869

Rental Information

Surtitles (additional rental required)	Contact Roxy Stouffer-Cruz at 612-342-9571
Royalties & Production Rights:	
Director (Christopher Mattaliano)	First right of refusal or \$1000
Set Designer (Allen Moyer)	10% of rental fee
Costume Designer (Jamie Scott)	10% of rental fee
Technical Supervisor Required:	For load-in to rehearsal hall, theater and strike.
Fees (<i>subject to future increases</i>)	\$465.00 per work day \$250.00 per travel day
Housing	Provided by renter
Per Diem	Federal maximum amount per city of engagement
Transportation	Provided by renter
Other:	
Approximate Warehouse Costs:	\$3000 each way
Notice for Loading:	2 weeks
Number of Vans:	1 - 53' air ride logistics van (rail shipment not allowed)

SET TECHNICAL INFORMATION

Minimum Width:	70'	Minimum Depth:	38'
Total number of line sets:	24 (masking not included)	Line sets for Scenery:	15
Line sets for Electrics:	9	Line sets for Masking:	6 + portal border
Height of tallest drop:	38' sky drop	Can drops be tripped?	No
Furthest upstage flying unit:	US Ext Cut Drop	Weight of heaviest flyer:	400# Rossini Port.
Largest hard flying unit:	15'6" h x 13'w	Largest soft flying unit:	30' h x 60'w
Largest standing unit:	34'6" h x 47'w	Number of ground cloths:	1

Hardware available with rental: Assembly Hanging Specialty

Special storage considerations: Rosina's Balcony Unit stores SR and measures 22' x 4'. Soft facing hangs on edge of deck and extends into orchestra pit. Facing measures 50' and hangs down 3' from DS top edge of raked deck.

Stock items: The Minnesota Opera's Raker platforms and supports provided with rental for raked deck and masking.

NOTE: Costumes must be rented through Washington National Opera. Costumes for this production belong to and are stored by Washington National Opera. Washington National Opera will rent them separately, contingent on availability. The using company is responsible for verifying the availability of the costumes and for making all arrangements for shipping, cleaning and handling. Contact Washington National Opera at 202-295-2450

HISTORY OF PREVIOUS USAGE

Company	Year	Company	Year
The Minnesota Opera	1990	Opera Company of Philadelphia	2005
Anchorage Opera	1990	Florida Grand Opera	2006
Opera Omaha	1990	Michigan Opera Theatre	2006
Washington Opera	1995	Opera Omaha	2007
Cincinnati Opera	1997	Arizona Opera	2009
Austin Lyric Opera	1998	The Minnesota Opera	2009
Palm Beach Opera	2000	Washington National Opera	2009

PLEASE NOTE

If the production is used, all production materials must be returned within thirty days of the final performance. A payment of \$50.00 will be required if said materials are not returned.

Production Notes

CAST

Number of Principals: 13 (5 roles double cast)
Number of Chorus: 13 men
Number of Supers 5 women, 3 men

ARTISTIC STAFF

Conductor	Emmanuel Plasson
Stage Director	Chuck Hudson
Assistant Director	Doug Scholz-Carlson
Set Designer	Allen Moyer
Lighting Designer	Paul Palazzo
Costume Designer	James Scott
Chorus Master	Joseph Lawson
Make-up and Wigs	Tom Watson
English Surtitles	Floyd Anderson
Asst. Conductor	Jeffery Domoto
Accompanist/ Continuo	Bruce Stasyna

PRODUCTION STAFF

Scenic & Lighting Director	Tom Mays
Costume Director	Gail Bakkom
Technical Director	Stuart Schatz
Stage Manager	Alex Farino
Properties Master	Jim Bakkom
Surtitles Coordinator	Roxanne Stouffer-Cruz
Charge Painter	Michael Bolin
Production Carpenter	JC Amel
Production Electrician	Bill Healy
Production Properties	Mike Makin
Production Fly-man	Mark Dalglish

OWNERSHIP

This production of *The Barber of Seville* is a co-production between The Minnesota Opera, Washington National Opera and Opera Omaha. The Scenery, Props and Costumes for this production are owned jointly by The Minnesota Opera, Washington National Opera and Opera Omaha. The surtitles are owned by The Minnesota Opera.

SHOPS

Sets constructed by:	The Minnesota Opera Shop
Costumes constructed by:	The Minnesota Opera Costume Shop
Wigs constructed by:	Tom Watson

MUSIC & ROYALTY

Composer:	Gioachino Rossini
Librettist:	Cesare Sterbini
Publisher of Piano/Vocal Scores:	Schrimer
Total number of pit musicians:	37
Breakdown of pit musicians:	6 Violin I, 6 Violin II, 4 Viola, 4 Cello, 2 Bass, 2 Flute, 2 Oboe, 2 Clarinet, 2 Bassoon, 4 Horn, 2 Trumpet, 1 Tympani, 1 Percussion, 1 Harpsichord

RUNNING TIMES OF SHOW

ACT I:	1 hour 34 minutes
Intermission	20 minutes
ACT II:	52 minutes
Total Time:	2 hours 46 minutes (plus 3 minutes for bows)

Technical Schedule

Saturday-3/18/95

8am
 Load in scenery
 Hang electrics, masking and scenery
 2 + 12 elex
 2 + 8 carps
 2 loaders (1 24' truck)

Sunday-3/19/95

8am-10pm (meals TBA) Load in scenery, props and costumes
 Set pit and erect scenery
 2 + 8 carps
 2 + 2 pops
 2 + 10 elex
 2 sound
 1pm-6pm ADD 4 carps
 2 loaders (1-24' truck)

Tuesday-3/21/95

8am-12pm Production
 2 + 6 carps (including show crew)
 2 + 2 props
 2 + 6 elex (including show crew)
 1:30pm-5:30pm Piano Tech rehearsal- no costumes
 SHOW CREW - No Wardrobe
 2 + 4 carps (3 fly, 3 deck)
 2 + 2 props
 2 + 1 elex (board op, 2 deck)
 sound
 surtitle projection
 2pm-5pm Unpack Wardrobe
 1 Wardrobe
 7pm-10pm Piano Dress Rehearsal
 SHOW CREW
 Add 3 Wardrobe to this and all subsequent show calls

Wednesday-3/22/95

8am-12pm Lighting
 1pm-5pm
 2 + 4 carps (show crew)
 2 props
 2 + 4 elex (including show crew)
 sound
 7pm-10pm Orchestra Dress rehearsal
 SHOW CREW
 1 props & 1 Elex called at 6:00
 Remainder of crew at 6:30

Thursday-3/23/95

8am-12pm Lighting
 1pm-5pm
 2 + 4 carps (show crew)
 2 props
 2 + 4 elex (including show crew)
 sound
 7pm-10pm Orchestra Dress rehearsal (preview)
 SHOW CREW
 1 props & 1 Elex called at 6:00
 Remainder of crew at 6:30

Friday-3/24/95

11am Orchestra Dress rehearsal (student audience)

9:30am SHOW CREW
House Carps and elex
10:00am Remainder of House crew
10:30am Extras and wardrobe
11:00am Curtain

Saturday-3/25/95
1:30pm-5:30pm Lighting
2 + 4 carps (show crew)
2 + 2 props
2 + 2 elex

8pm PERFORMANCE #1
SHOW CREW
6:30pm HOUSE CARPS AND ELEX
7:00pm REMAINDER OF HOUSE CREW
7:30pm EXTRAS AND WARDROBE
8:00pm CURTAIN

Sunday 3/26/95
2pm PERFORMANCE #2
SHOW CREW
12:30pm HOUSE CARPS AND ELEX
1:00pm REMAINDER OF HOUSE CREW
1:30pm EXTRAS AND WARDROBE
2:00pm CURTAIN

Thursday-3/30/95
7:30pm PERFORMANCE #3
SHOW CREW
6:00pm HOUSE CARPS AND ELEX
6:30pm REMAINDER OF HOUSE CREW
7:00pm EXTRAS AND WARDROBE
7:30pm CURTAIN

Friday-3/31/95
7:30pm PERFORMANCE #4
SHOW CREW
6:00 HOUSE CARPS AND ELEX
6:30 REMAINDER OF HOUSE CREW
7:00 EXTRAS AND WARDROBE
7:30 CURTAIN

Saturday-4/1/95
8pm PERFORMANCE #5
SHOW CREW
6:30 HOUSE CARPS AND ELEX
7:00 REMAINDER OF HOUSE CREW
7:30 EXTRAS AND WARDROBE
8:00 CURTAIN

Sunday-4/2/95
2pm PERFORMANCE #6
SHOW CREW
12:30 HOUSE CARPS AND ELEX
1:00 REMAINDER OF HOUSE CREW
1:30 EXTRAS AND WARDROBE
2:00 CURTAIN

Monday-4/3/95
8am - 4pm Strike and restore
2 + 12 carps
2 + 12 elex
2 + 2 props
2 sound
4 loaders

Line Set Schedule

LINE SET	PLASTER LINE	BATTEN LENGTH	OMT HOUSE PLOT	PRODUCTION HANGING PLOT	NOTES
P	0'-0"		Proscenium	Proscenium	
FC	1'-0"		Fire Curtain	Fire Curtain	
1	1'-8"	86'	House Teaser	Blackout Curtain	
2	2'-4"	86'	House Curtain		
3	3'-0"	86'	No. 1 Portal Border	Scrim, Legs, Border to make 24' h x 34' w opening	MOC Scrim 12'+6' Legs. Scrim Tail down 5' 6", legs Tail down 6' legs - 17' from CL to 35'
4	3'-6"	86'	No. 1 Portal Legs	Hard Portal Header	Will breast slightly US (510 lbs)
5	4'-6"	86'	No. 1 Lighting Truss	OMT Black Border	Border Trims 28' from Show Deck
6	5'-0"	62'	Trapped By Truss	OMT Black Legs	Legs - 20'6" from Show Deck
7	5'-6"	62'	General Purpose Set	Chandeliers	Cable 28' to pipe w/. sock
8	6'-0"	62'	General Purpose Set		
9	6'-6"	62'	General Purpose Set	Sound	
10	7'-0"	62'	Restricted Use Set	#1 Electric	Trim 26'0" to House Deck
11	7'-6"	62'	Orchestra Ceiling	Motorized Truss Batten	
12	8'-0"	62'	Restricted Use Set	OMT Black Legs	Legs -17' from CL to 28'
13	8'-6"	62'	General Purpose Set	Show Curtain	
14	9'-0"	62'	General Purpose Set		
15	9'-6"	86'	General Purpose Set		
16	10'-0"	86'	No. 1 Black Border	#2 Electric	Trim 27'6" to House Deck
17	10'-6"	86'	No. 1 Black Legs	#3 Electric	Trim 28'6" to House Deck
18	11'-0"	62'	General Purpose Set		
19	11'-6"	62'	General Purpose Set	Interior Portal	
20	12'-6"	62'	General Purpose Set	OMT Black Legs	Legs - 25' from CL to 35'
21	13'-0"	62'	General Purpose Set	#4 Electric	Trim 32' 0" to House Deck
22	13'-6"	62'	General Purpose Set	#5 Electric	Trim 33' 0" to House Deck

23	14'-0"	62'	General Purpose Set	Toy Theater & Marionettes	SR Edge - 1'0" SL of CL. Bottom Trims to 3'
24	14'-6"	62'	General Purpose Set		
25	15'-0"	62'	General Purpose Set		
26	15'-6"	62'	General Purpose Set	Music Room	
27	16'-0"	62'	General Purpose Set	Rosina's Boudoir	Door, SL frame edge 3' SR of CL
28	16'-6"	62'	General Purpose Set	DS Ext Cut Drop	Door, SL frame edge 2' SR of CL
29	17'-0"	86'	No. 2 Black Border	Bartolo's Salon	
30	17'-6"	86'	No. 2 Black Legs		
31	18'-0"	86'	General Purpose Set	#6 Electric	Trim 34'6" to House Deck
32	18'-6"	62'	General Purpose Set	#7 Electric	Trim 35' to House Deck
33	19'-0"	62'	General Purpose Set		
34	19'-6"	62'	General Purpose Set		
35	20'-6"	62'	General Purpose Set	Rossini's Portrait	SL Cable - 1' SL of CL. (405)
36	21'-0"	62'	General Purpose Set	Portrait Trip	For balancing portrait
37	21'-6"	62'	General Purpose Set	#8 Electric	Trim 38' 0" to House Deck
38	22'-0"	62'	General Purpose Set		
39	22'-6"	62'	General Purpose Set		
40	23'-0"	62'	General Purpose Set	Split Black	SL Panel ties to 2' SR of CL and is DS, SR panel is US
41	23'-6"	62'	General Purpose Set		
42	24'-0"	86'	No. 3 Black Border	US Ext Cut Drop	SR Edge - 5'6" SR of CL
43	24'-6"	86'	No. 3 Black Legs	OMT Black Legs	Legs - 22'0" from CL to 35'
44	25'-0"	86'	General Purpose Set	#9 Electric	Trim 30' 0" to house deck
45	25'-6"	62'	General Purpose Set		
46	26'-0"	62'	General Purpose Set		
47	26'-6"	62'	General Purpose Set		
48	27'-0"	62'	General Purpose Set		
49	27'-6"	62'	General Purpose Set		

50	28'-6"	62'	General Purpose Set		
51	29'-0"	62'	General Purpose Set		
52	29'-6"	62'	General Purpose Set		
53	30'-0"	62'	General Purpose Set		
54	30'-6"	62'	General Purpose Set		
55	31'-0"	86'	No. 4 Black Border		
56	31'-6"	86'	No. 4 Black Legs		
57	32'-0"	86'	General Purpose Set		
58	32'-6"	62'	General Purpose Set		
59	33'-6"	86'	No. 2 Lighting Truss	Sky Drop	From Washington Opera
60	34'-6"	62'	General Purpose Set		(shifted 7' SL)
61	35'-0"	62'	General Purpose Set		
62	35'-6"	62'	General Purpose Set		
63	36'-6"	86'	General Purpose Set		
64	37'-0"	86'	General Purpose Set		
65	37'-6"	86'	General Purpose Set		
66	38'-0"	86'	General Purpose Set		
67	38'-6"	86'	General Purpose Set		
68	39'-0"	86'	General Purpose Set		
69	39'-6"	86'	General Purpose Set		
70	40'-0"	86'	General Purpose Set		

Rail Cue Sheet

Act 1 - (87:00)

Cue #	Lineset	Item	In/Out	Speed	Light	Placement	Time
RAIL PRESET							
	#3	Black Portal and Scrim	IN				
	#7	Chandeliers	IN				
	#24	Marionettes/Toy Theatre	IN				
	#35	Rossini Portrait	IN				
	#39	Blackout Curtain	IN				
	#41	US exterior Drop	IN				
	#55	Sky Drop	IN				
RQ 1	#7	Chandeliers	OUT	7 count	red	8/5/4	7:00
	#24	Marionettes/Toy Theatre	OUT				
RQ 2	#3	Black Portal and Scrim	OUT	7 count	blue	9/2/2	7:15
	#35	Rossini Portrait	OUT	7 count			
	#28	DS Exterior	IN	7 count			
auto-follow	#39	Blackout Curtain	OUT				
RQ 3	#13	Show Curtain	IN	7 count	red	64/L/L	36:00
auto-follow	#28	DS Exterior	OUT				
	#41	US Exterior	OUT				
	#35	Rossini Portrait	IN				
RQ 4a	#13	Show Curtain	OUT	10 count	red	75/4/1	39:30
RQ 4b	#35	Rossini Portrait	OUT	7 count	red	77/4/1	41:00
	#19	Interior Portal	IN	7 count			
	#27	ROSINA Boudoir	IN	7 count			
auto-follow	#29	BARTOLO's Salon	IN				
RQ 5a	#27	ROSINA Boudoir	OUT	7 count	red	85/2/end	46:30
RQ 6	#27	ROSINA Boudoir	IN	7 count	red	95/6/1	54:00
RQ 7	#27	ROSINA Boudoir	OUT	7 count	red	124/1/1	69:00
RQ 8	#13	Show Curtain	IN	5 count	red	201/3/1	89:00

Intermission (20:00)

INTERMISSION MOVES

#26	Music Room Drop	IN
#29	BARTOLO's Salon	OUT

Act 2 - (49:00)

Cue #	Lineset	Item	In/Out	Speed	Light	Placement	Time
RQ 9	#13	Show Curtain	OUT	7 count	red	after M's bow	00:00
RQ 10	#13	Show Curtain	IN	7 count	red	259/4/3	27:00
auto-follow	#26	Music Room Drop	OUT				
	#19	Interior Portal	OUT				
	#28	DS exterior	IN				
	#41	US exterior	IN				
RQ 11	#13	Show Curtain	OUT	5 count	red	264/4/1	30:30
RQ 12	#27	ROSINA Boudoir	IN	7 count	blue	266/4/3	31:30
	#19	Interior Portal	IN				
auto-follow	#28	DS exterior	IN				
	#41	US exterior	IN				
RQ 13	#27	ROSINA Boudoir	OUT	7 count	red	311/3/1	47:00
	#19	Interior Portal	OUT				
	#35	Rossini Portrait	IN				
RQ 15	#13	Show Curtain	IN	5 count	red	318/2/4	49:00
RQ 16	#13	Show Curtain	OUT	7 count	red	for bows	
RQ 17	#13	Show Curtain	IN	7 count	red	after bows	



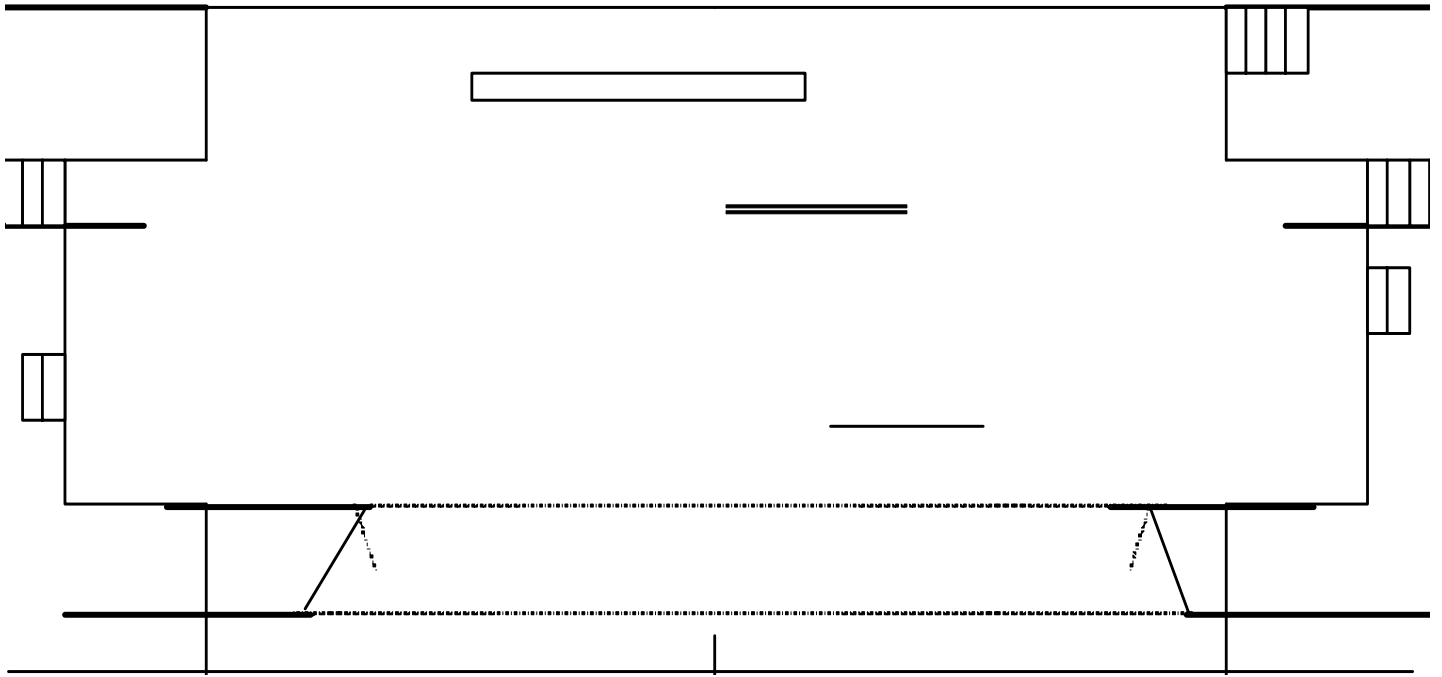
Props List

Qty	Description
	Work Station (Pomata fina)
	Fountain
1	Octagonal Table
1	Harpsichord
1	Harpsichord bench
	Rosina's Make up Table
	Mirror for Make up Table
	Settee
	Coat Stand
	Armchair
4	Side chairs
1	Crash box
1	Small Suitcase
3	Wig Stands
1	Music Stand
3	Stools
	Traveling Barbershop Case
1	Coronet
1	Flute
3	Guitars
5	Violins/bows
1	Cello/bow
2	Walking Sticks
1	Laundry Basket/laundry
1	Wooden Crate
3	Marionettes
1	Lantern
12	Chorus Swords w/sheaths
	Fiorello Sword/sheath
	Almaviva Sword/sheath
2	Pistols
2	Candlesticks
1	Framed Painting
1	Rectangular Jewelry box
3	Oval Jewelry boxes
3	Tall round Jewelry boxes
3	Round glass jewelry boxes
1	Small oval jewelry box
	Ink and Sand dispensers
6	Make up brushes
1	Hair brush
1	Comb
1	Hand mirror

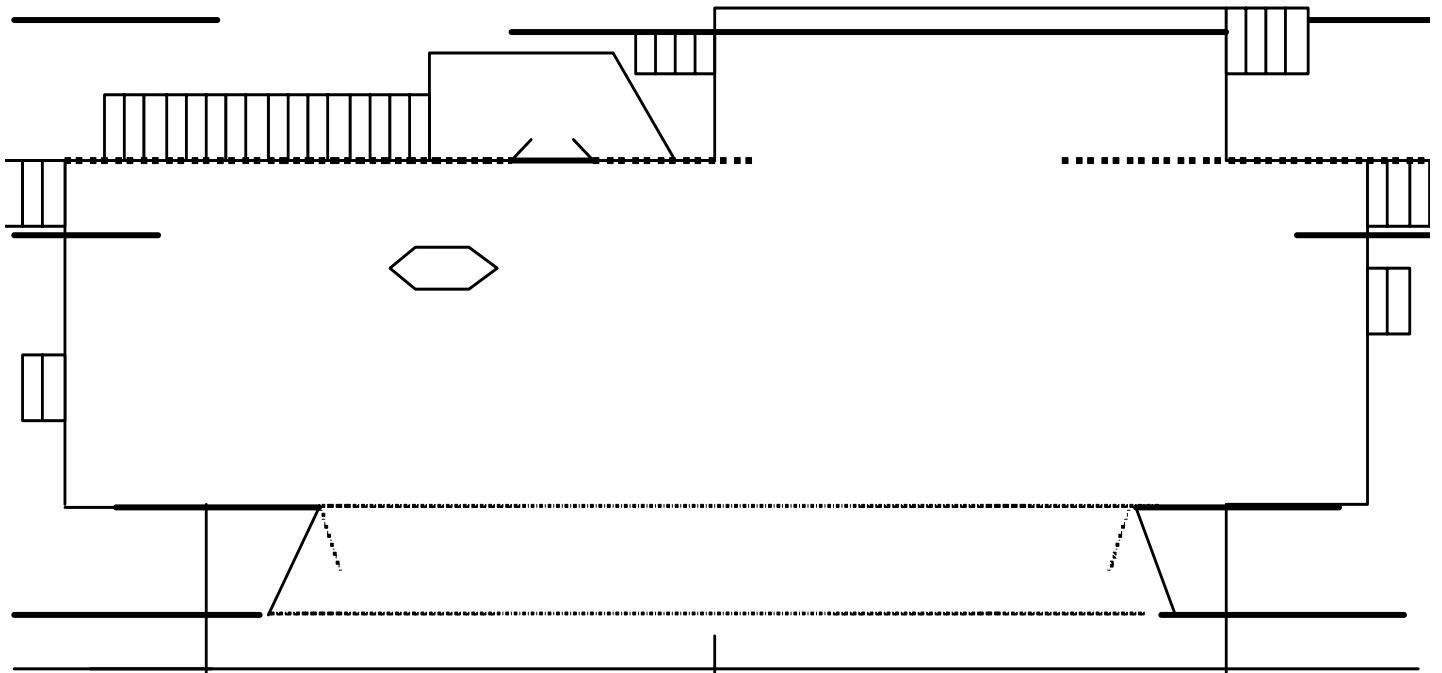
1	Small bell
1	Writing tray
2	Wigs
2	Shaving towels
	Wedding contract folder
1	Quill pen
1	Shaving basin
	Flower
4	Drawstring purses
1	Magnifying glass
1	Feather duster
1	Large key on ring
1	Small potion bottle
2	Boxes
	Flower bouquet
1	Embroidery hoop
	Smelling salts
3	Serving trays
20	Champagne flutes
1	Broken plate
1	Large key
	Sheet music
	Business cards
	Letters
	Wedding contract

Minis

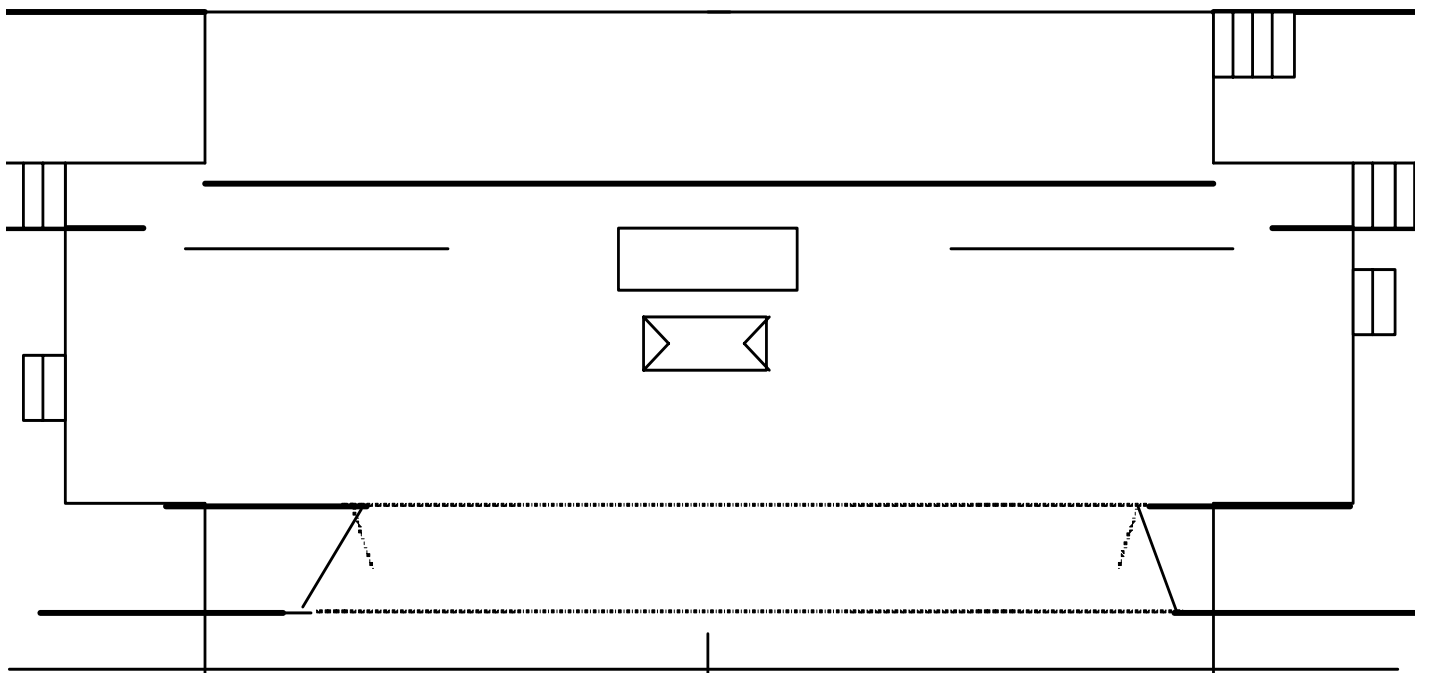
Top of Show



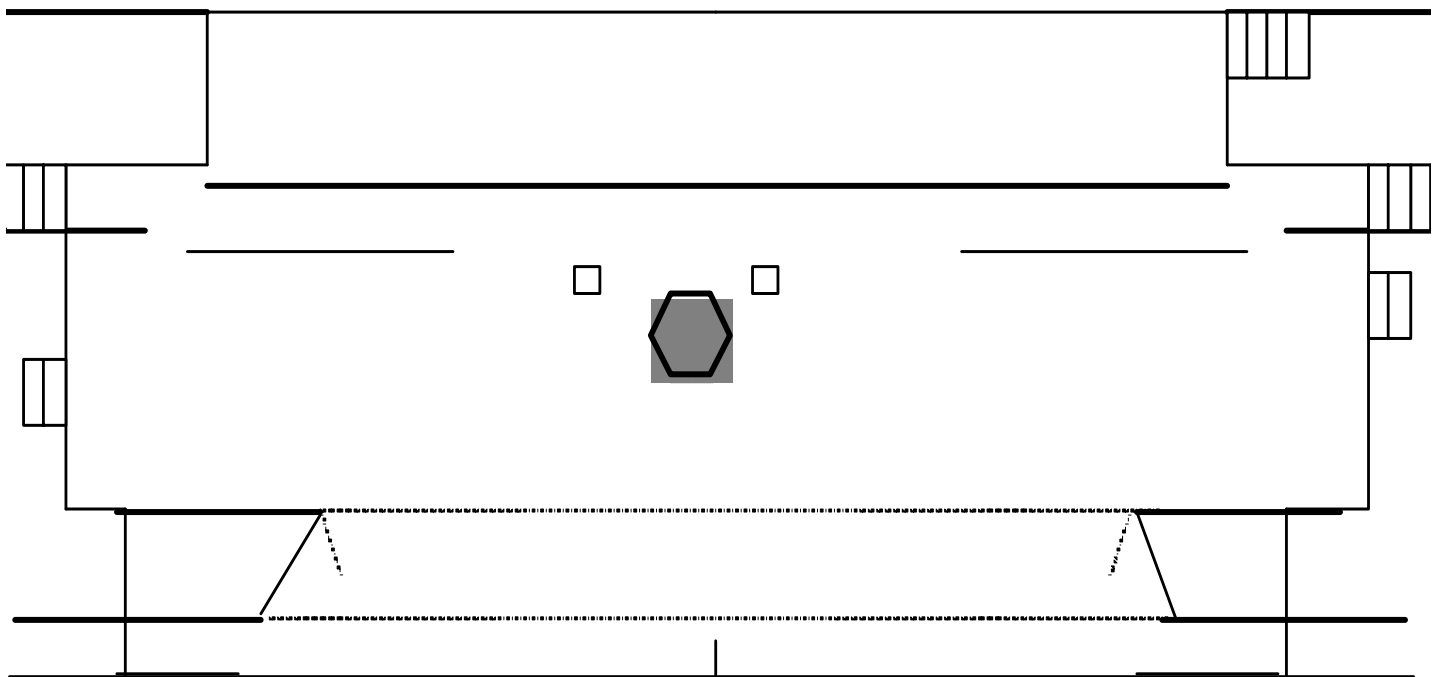
Act One - Exterior



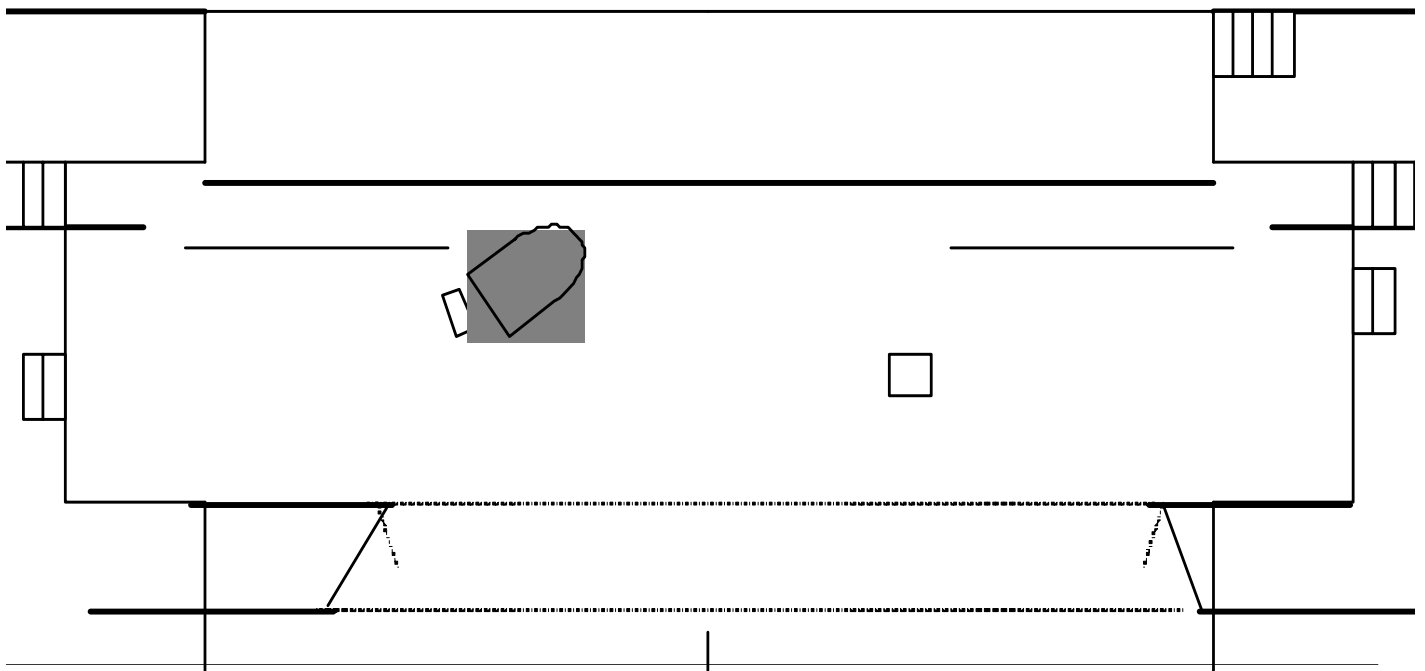
Act One - Rosina's Boudoir



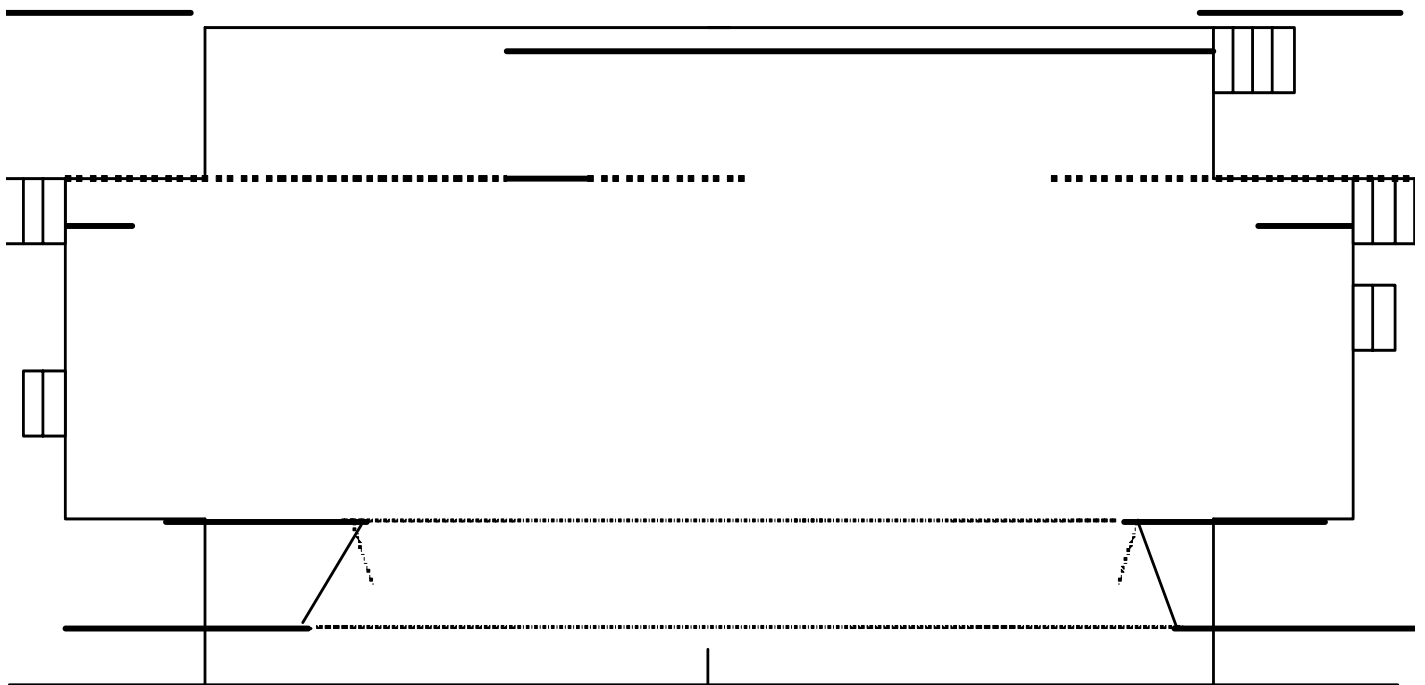
Act One - Bartolo's Salon



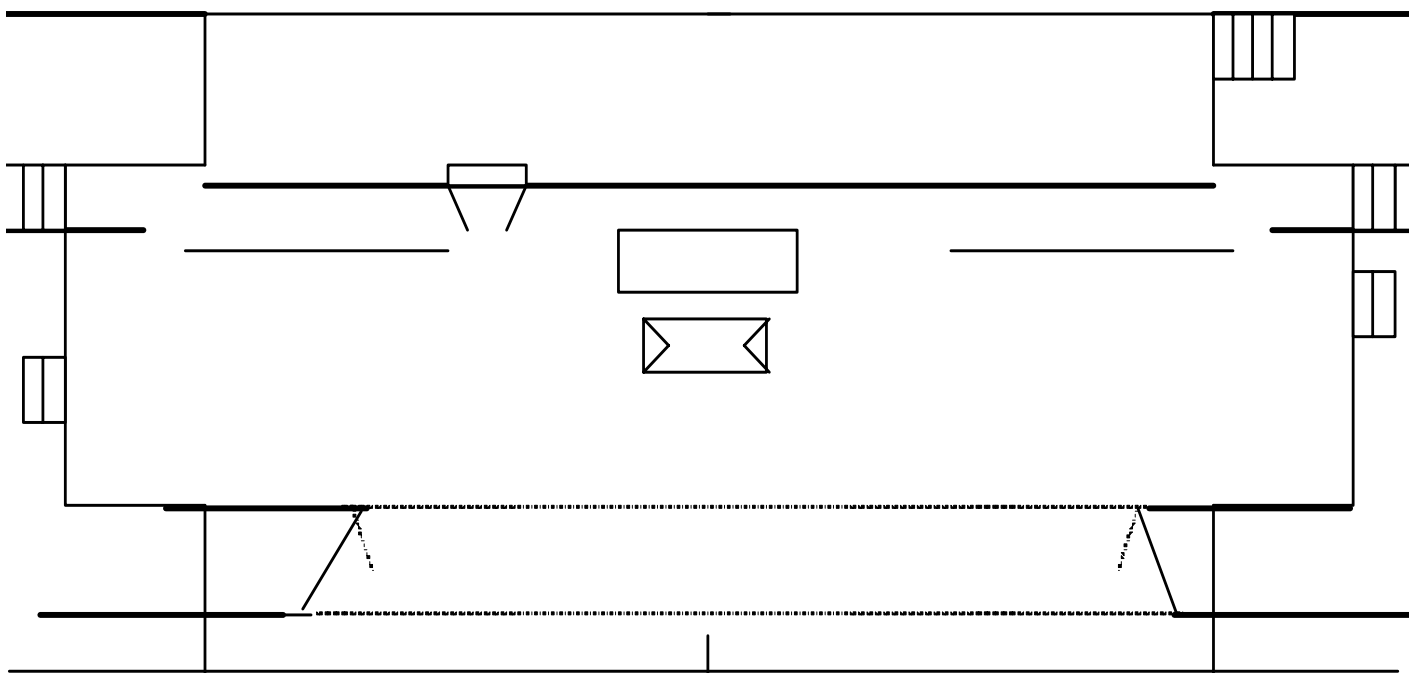
Act Two – Bartolo’s Music Room



Act Two - Storm



Act Two – Rosina's Boudoir



Production Photos





Note: The pictured skeleton and globe are not available for rent.

